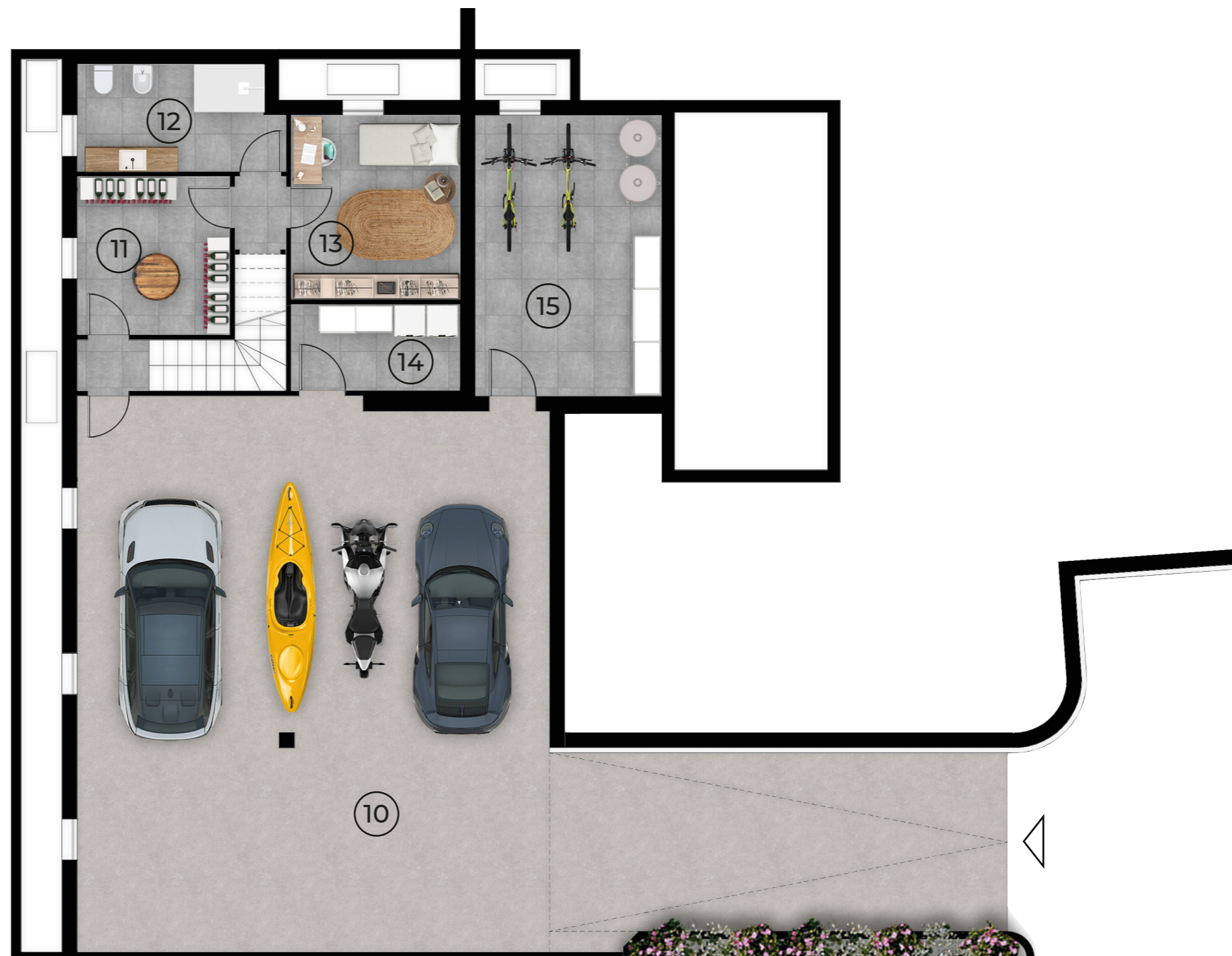
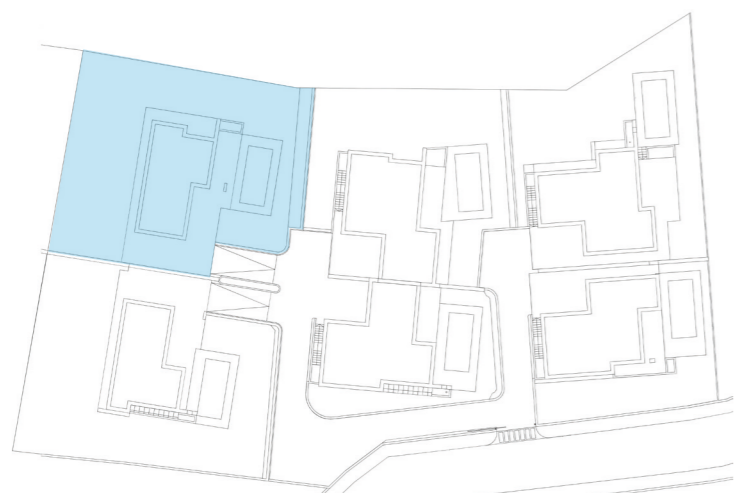


Villa 5

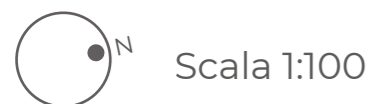
Pianta piano terra, piano primo e interrato



Piano Interrato

1 Soggiorno	35,59	m ²
2 Cucina	10,00	m ²
3 Disimpegno	1,52	m ²
4 Camera	17,08	m ²
5 Bagno	7,44	m ²
6 Camera	11,18	m ²
7 Bagno	4,14	m ²
8 Camera	15,04	m ²
9 Piscina e sundeck	46,30	m ²
10 Autorimessa	100,00	m ²
11 Cantina	9,26	m ²
12 Bagno	8,15	m ²
13 Camera	11,94	m ²
14 Vano tecnico	5,63	m ²
15 Ripostiglio	20,13	m ²
Aree esterne PT	124,50	m ²
Aree esterne P1	104,60	m ²
Giardino	1375,33	m ²

Superficie commerciale 452,40 m²

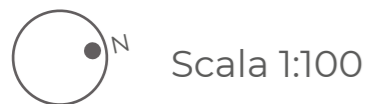




Piano Terra



Piano Primo



Scala 1:100

